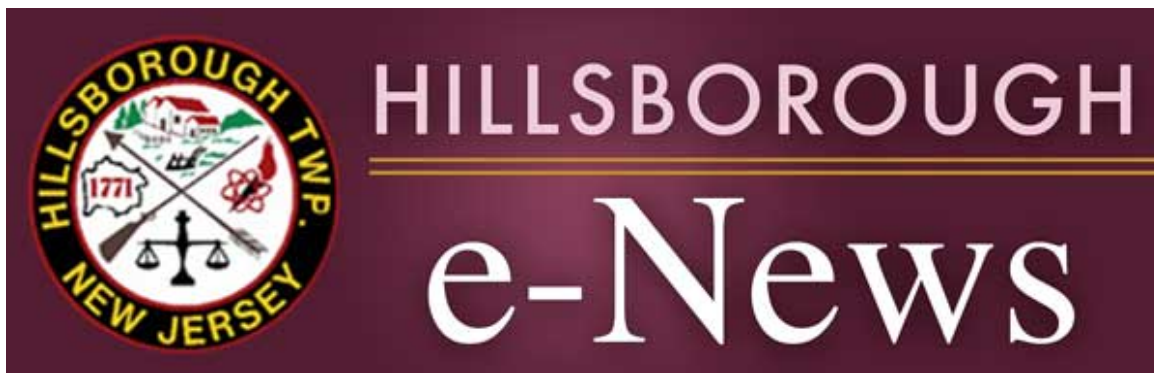


SHARE:

[Join Our Email List](#)

Special Bulletin: COVID-19 UPDATE

Thursday, April 23, 2020



COVID-19 Hillsborough Reported Case Update

As of 4/23/2020 - 3pm	Cases	Deaths
Somerset County	2,534	190
New Jersey	99,989	5,368
United States	802,583	44,575

Breakdown of Hillsborough Township Cases As Reported by Hillsborough Township Health Department

Revised Disclaimer :

Please be advised that the numbers posted below and on the Township website are those that are reported by Hillsborough Township Health Department based on reports from the NJ Department of Health surveillance system. The reported numbers are only from those individuals who have been tested for COVID-19 and are confirmed positive through an FDA approved laboratory for COVID-19 testing purpose. It does not include those contacts of the positive individuals or any individuals, who are sick and have not been tested.

Age Range	# of Positive Cases
0-9	2
10-19	4
20-29	16
30-39	14
40-49	33
50-59	36
60-69	36
70-79	14
80-89	25
90-99	8
100+	0
Total Cases	188
Official Recovered	82
Deceased	11
Long Term Care / Assisted Living Facilities *	
Confirmed Cases	63
Confirmed Deceased	13

* Confirmed cases and confirmed deceased from Long Term Care and Assisted Living Facilities may not also be included in the total number of cases above.

If you are a Hillsborough resident and have tested positive for Coronavirus / COVID-19, please contact the Health Department at 908-369-5652 .

The Hillsborough Township Health Department continues to monitor all cases and is working with the State to identify any potential contacts for follow-up. A representative from the Hillsborough Township Health Department will reach out to all individuals determined to have been in close contact with the positive testing persons within 24-48 hours of each case being confirmed.

NJ Residents with a Positive COVID-19 Test: **Instructions & Next Steps**

Somerset County COVID-19 Testing Site

Somerset County and Hunterdon County, in collaboration with Raritan Valley Community College - [New Dates Announced](#)

Testing will be by appointment only and a valid doctor's prescription is required.

STAY HOME.

STAY SAFE. SAVE LIVES.

www.co.somerset.nj.us/covid19status

SOMERSET & HUNTERDON TESTING SITE for COVID-19

Location:
Raritan Valley Community College
118 Lammington Rd, Branchburg, NJ 08876

Time:
10 am to 1 pm

Dates:
APR April 16, 17, 20 22 & 24

WHO CAN BE TESTED?

Must be a resident of Hunterdon or Somerset County age 5 & above.

Must show proof of residency at the test site, such as a valid driver's license or state-issued identification.

Must be exhibiting symptoms:

FEVER COUGH SHORTNESS OF BREATH

Must have a valid prescription or written order from a physician.

Patients must arrive by car and have an appointment.

Residents can make an appointment and complete a registration form by visiting:
<https://somerset-hunterdon.adlabscovidtest.com>

Residents without access to a computer can call: (908) 237-7150

STAY HOME. STAY SAFE. SAVE LIVES.

For more information, contact coronavirus@co.somerset.nj.us

SOMERSET

[Click here for Spanish version](#)

Mayor Doug Tomson Reads "My Teacher for President"



Hillsborough Municipal Services are open to serve both our residents and business community, despite the Municipal Building being closed. [See the full list of services.](#)

Hillsborough Township employees have conducted business continuity training exercises for many years for emergencies such as this, which allow Municipal Offices to be fully operational during COVID-19.

Below are photos of Hillsborough Township Departments delivering the services that you have come to expect from Hillsborough Township, along with a brief listing of some of the available services.

Building

- Remote plan review
- Photo documentation of inspections
- Video inspections coming soon
- New applications can be submitted through the mail
- Large construction plans can be dropped off, please call to make arrangements
- For more information visit the Building Department's [website](#)

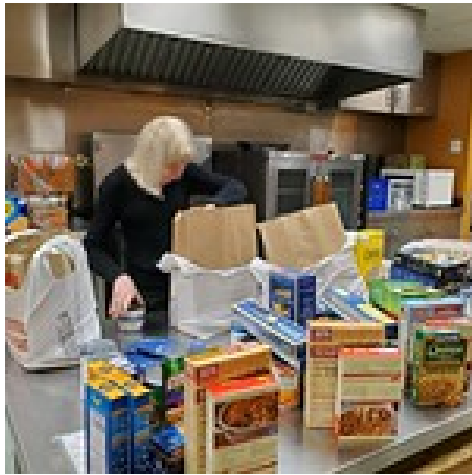
Parks

- Beautification and maintaining all Township parks
- Mowing and mulching

- Seeding and turf repair
- Trail and bike path inspections
- Daily inspections of all security fencing at parks

Social Services

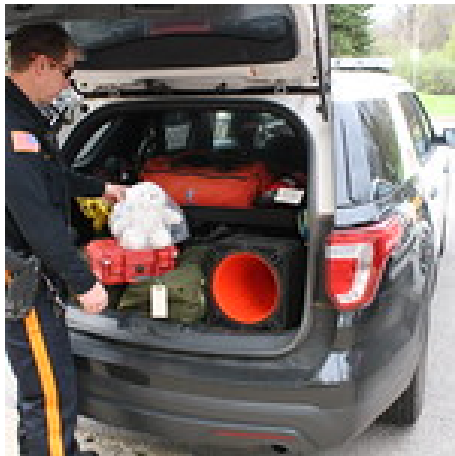
- Maintain Hillsborough Community Assistance Network (C.A.N.) donations
- Provide senior transportation to doctor or store as needed
- Provided clients with 4-weeks of product to limit exposure to both the clients and the employees
- For more information visit Social Services Department's [website](#)



Social Services:
Secretary Marcy Palinkas preparing food bags for C.A.N. recipients



Building:
Building Inspector Harrison Wright conducting an inspection



Police:
Officer Weckenman preparing his vehicle - teddy bears are used when there are small children involved in the police call



Parks:
Parks Worker Ernesto Gonzalez mowing Willow Road Complex

Updates, Closures and Cancellations

A full list of the COVID-19 Updates, Closures and Cancellations is posted on the [Hillsborough Township website](#)

COVID-19 Community Resources

For a full list of COVID-19 Resources, Visit the
Hillsborough Township [COVID-19 Information Page](#)

- [Greater Raritan Workforce Development Board](#) Hosting Webinar Workshops Focus on Career Training on May 4th, [Mastering Interviewing](#), and on May 6th, [The Art of Effective Communication](#)
- [#BeSafeAtHome and Discover Virtual Education Resources Available at Your Library](#)
- [Hillsborough YMCA - Information For Essential Personnel Child Care](#)

How Can I Help?

[Hillsborough Township Now Accepts Online Donations for the Community Assistance Network](#)

Effective immediately, online donations for Hillsborough Community Assistance Network (C.A.N.) can now be made via the Township [website](#).

[Somerset County Office of Emergency Management Continues to Accept Personal Protective Equipment \(PPE\) Donations](#)

The Somerset County Office of Emergency Management continues to accept donations of personal protective equipment. A collection box has been set up in front of the Emergency Services Training Academy, located at 402 Roycefield Road, Hillsborough, NJ 08844. [See list of needed items](#).

[Donate PPE](#)

[Register to Volunteer](#)

Hillsborough is Open for Business

Which of your favorite Hillsborough locations are **"Open for Business"** ?
Support Hillsborough's Local Businesses!



Traffic Advisory

Overnight utility work at Route 206 and Mountain View Road, Sunday, April 26th at 10:00 pm until Monday, April 27th 6:00 am. (Weather permitting)

Please exercise caution while traveling through the area.

US Census 2020 Reminder

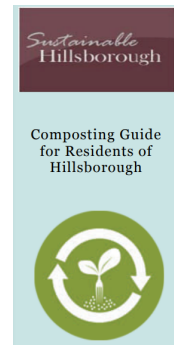
Hillsborough Residents: Don't Forget to Respond to the Census!

The 2020 Census is happening now! You can complete your questionnaire online , by phone, or by mail.

Other News

Take the Hillsborough Compost Challenge 2020 Pledge

Sustainable Tip: Composting is a great way to turn what would otherwise go to the landfill as garbage in a beneficial product to use in your garden. See the Sustainable Hillsborough Composting Guide for more information.



Earth Day was April 22nd-Kaptain Cleanup Wanted to Know How You Celebrated

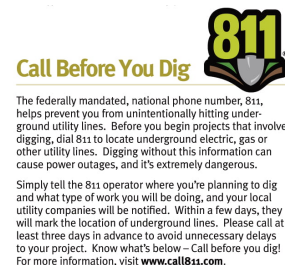
Send your photos of how you are celebrating Earth Day to dpw@hillsborough-nj.org.

See April's issue of " *Trash Talk With The Litter Hero*" on our website.



Reminder: Call Before You Dig!

Federally mandated, national phone number, 811, helps prevent you from unintentionally hitting underground utility lines. Before you begin projects that involve digging, call 811 to locate underground electric, gas or other utility lines. For more information, visit www.call811.com



This Newsletter is brought to you by the Hillsborough Township Committee:

Mayor
Doug Tomson

Deputy Mayor
Shawn Lipani

Committeeman
Frank DelCore

Committeewoman
Olivia Holmes

Committeewoman
Gloria McCauley

Hillsborough Township | www.hillsborough-nj.org

