

Monday, July 6, 2020



HILLSBOROUGH e-News

July 7th 2020 Primary Election Information

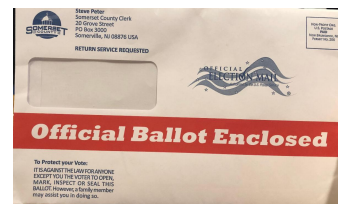
[Somerset County 2020 Primary Election Updates](#)

- [Somerset County Clerk Launches 'How to Vote by Mail' Video.](#)
- [For additional election information from Somerset County.](#)
- [Hillsborough Township Voting Information](#)



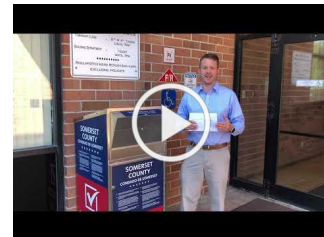
Returning Primary Election Voted Mail-In Ballots:

- Registered, active, Democrats and Republicans have been mailed ballots.
- There is a drop box for ballots just outside the front entrance of the Hillsborough Municipal Building.
- There are also drop boxes located in [several locations throughout the County.](#)
- All voted ballots must be in a drop box, postmarked, or delivered to Board of Elections, by 8:00 pm on Election Day.
- Voted Mail In Ballots will not be accepted at the Polling locations.
- The *County Clerk* cannot accept faxed or emailed copies of a Application for Vote by Mail Ballot, unless you are a Military or Overseas Voter, since an original signature is required.



In Person Voting:

- Visit the [Voting Information](#) page on the Hillsborough Township website to find your polling location for this election.
- In person voting will be via provisional ballot unless the voter is visually impaired or otherwise certifies to a disability which requires an accessible voting machine.
- Please visit the state website at <https://www.nj.gov/state/elections> for more information.



Township News

[Food Distribution Event for Any Hillsborough Resident To Be Held On July 15th](#)


This event has been made possible by the generosity of Atlantic Rehabilitation Institute and Derstine's in collaboration with Hillsborough Township and the Community Assistance Network. The event will be held on Wednesday, July 15th from 9:00 am to 11:00 am or until the items run out. It will take place at the Willow Road Complex on Willow Road directly across from Valinor Rd. [On-line registration is required](#). Seniors may register by calling the Social Services Department at 908-369-3880.

FOOD DISTRIBUTION EVENT
Open to any Hillsborough Township resident
Wednesday July 15, 2020
9:00 am - 11:00am
or until the items run out

•Registration required	1 Unit contains the following: <small>(All box weights are approximate)</small>
•This is a no contact event	Milk - 1 Gallon
•Items will be placed directly in your vehicle's trunk	Cheese - 5 lb Box
•Residency will be verified at the time of pickup by showing your drivers license	Produce - 10 lb Box
Visit the Hillsborough Township web page at Hillsborough-nj.org	Protein - 10lb Box
Seniors may register by calling the Social Services Department at 908-369-3880	<small>Residents are permitted a maximum of 2 units per household</small>

The Distribution will take place at the former Willow Road
Baseball Complex - on Willow Road directly across from Valinor Rd
There will be signs to direct you into the parking lot for pickup
Early arrivals will be asked to leave and return at 9am

A collaborative partnership



Department Updates



Hillsborough Township Municipal Services Open to Residents and Businesses

Municipal Building Now Open

After several months of the Peter J. Biondi Municipal Building being closed to the public amid the COVID-19 public health crisis, the building reopened on Monday, July 6th at 8 am. Safety precautions are in place to protect both the public and the employees of the facility. Visitors are required to wear a mask or other facial covering. Visitors are also reminded to practice social distancing of at least 6 feet apart and will be required to sign in the visitor entry log, located at the main entrance of the building.

If you are experiencing any of the following symptoms or have experienced these symptoms in the last 72 hours, please do not enter this building:

- Have a fever or feel feverish
- Cough (unrelated to allergies)
- Shortness of breath
- Unusual fatigue
- New loss of sense of taste or smell
- Worsening / consistent headaches
- Unusual muscle pain
- Sore throat (unrelated to allergies)
- Diarrhea
- Nausea
- Vomiting

Visitors are reminded that all services are available online or by calling the respective departments. Although we miss having our residents and visitors in the building, we are asking your help in preventing the spread of COVID-19 and adhering to the above requirements.

At this time, the Senior Activity Center remains closed.

The hours of operation for the Peter J. Biondi Municipal Building will be Monday - Friday, 8 am until 4:30 pm until further notice.

Hillsborough Municipal Services are open to serve both our residents and business community, despite the Municipal Building being closed to the public. [See the full list of services.](#)

Parks and Recreation

- [Summer In-Person / Virtual Programs](#)
Hillsborough Parks & Recreation is proud to begin offering in person/virtual programs such as Art in the Park, Hip-Hop Dance, Bricks 4 Kidz and many more.
- [Summer Scrimmage Series](#) Sign up today for our Summer Scrimmage Series for non competitive and low key soccer and softball games. Registration deadline is July 16th. [Register Now.](#)



Continue to check the Parks & [Recreation website](#) and social media accounts for future release dates and information.

Business Advocate:

- There are several Hillsborough Farms open and offering services for our community as an additional resource for food products. For the latest information regarding the Hillsborough farming community, please visit [Experience Hillsborough and click on Hillsborough Harvest](#) or visit the [HBA Facebook page](#).
- Which of your favorite Hillsborough locations are "Open for Business"? Support Hillsborough's Local Businesses!



Below are photos of Hillsborough Township Departments delivering the services that you have come to expect from Hillsborough Township.



Business Advocate:
Director David Kois and Administrative



Engineering and Finance:
Clerk to Treasurer Dana Margelis and

Assistant Pattie d'Anunciacao in the office practicing social distancing

Engineering Support Secretary Caitlin Vaz in the office while practicing social distancing



Township Employment Opportunities

- [Finance Department Clerk](#)
- [Part Time Information Technology Assistant](#)
- [Part Time Building Maintenance](#)

[Visit the Hillsborough Township Website to apply](#)

Community News

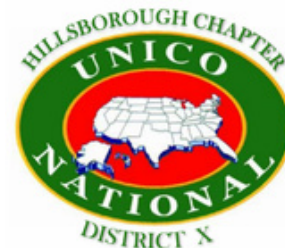
[Hillsborough Residents: Don't Forget to Respond to the Census!](#)

The Census is important because it impacts future planning and funding for infrastructure, future employment, training and healthcare programs. To learn more about the impacts of the census or to complete it online visit the website [2020CENSUS.GOV](https://2020census.gov). Take a few minutes and complete your census.



[Hillsborough Chapter of UNICO Italian-American Seeking Miss UNICO for 2020-2021](#)

UNICO National Hillsborough Chapter is looking for a young woman who can represent the township's Italian-American community for the 2020-2021 term. Miss UNICO will receive a \$1,000 Scholarship from Hillsborough UNICO. Additional information and application can be found at: [Hillsborough UNICO.org](https://HillsboroughUNICO.org).



[2020 Girls HHS Future Raider Field Hockey Camp](#)

2020 Girls HHS Future Raider Field Hockey Camp from Monday August 24th through Thursday August 27th. [Complete the form to register.](#)



[Reminder from Hillsborough Millstone Municipal Alliance: Parents Who Host Lose the Most](#)

Reminder for parents about the consequences of serving underage kids as the summer/grad season approaches. For the safety of your children and our community, please keep this in mind as you celebrate this accomplishment.



Virtual Mental Health Awareness Training

The Division of Mental Health and Addiction Services of the NJ Department of Human Services (NJ DHS) is providing Mental



Somerset County News

[Somerset County Library System of NJ \(SCLSNJ\)](#)

- [Somerset County Library System of New Jersey Launches Automatic Item Renewal Process](#)
- [Library System Begins Phased Reopening July 6 With Limited Hours of Operation; Customer Capacity](#)
- [#BeSafeAtHome and Meet New York Times Bestselling Children's Author Virtually With SCLSNJ :](#)

HOURS OF OPERATION

We are currently **operating with limited hours**. Please be patient with us as we phase in services following the COVID-19 mandatory closure.

Bridgewater, Manville, Mary Jacobs, North Plainfield, Peapack and Gladstone, Somerville, Warren Twp., and Watchung branches:
Monday-Thursday: 10 a.m. - 8 p.m.
Friday and Saturday: 10 a.m. - 6 p.m.

Bridgewater and Warren Twp. branches:
Sunday: 1-5 p.m.

Hillsborough branch:
Monday-Friday: 10 a.m. - 4:30 p.m.

The Bound Brook branch, the Branchburg Reading Station, and the Washington Valley Reading Station will remain closed until further notice. This is a temporary reopening schedule. We hope to expand hours soon.

[County Senior Centers Now Have Virtual Programs and Activities Via Zoom](#)

[Greater Raritan Workforce Development Board - Free Online Resources Help Residents Hone Virtual](#)

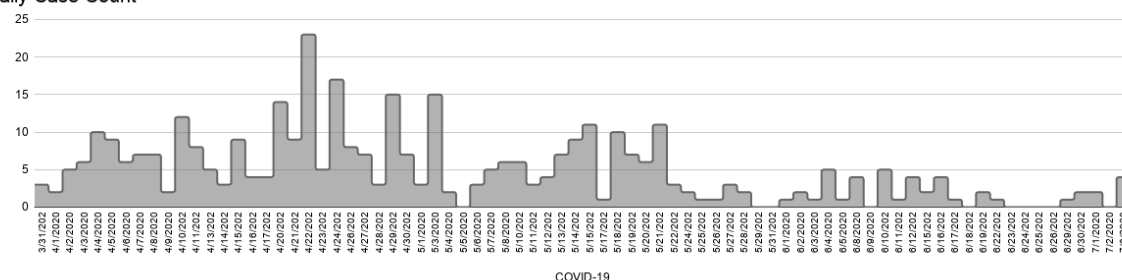
COVID-19 Community Resources

Reported Cases

[COVID-19 Case Information is updated daily on the Township website](#)

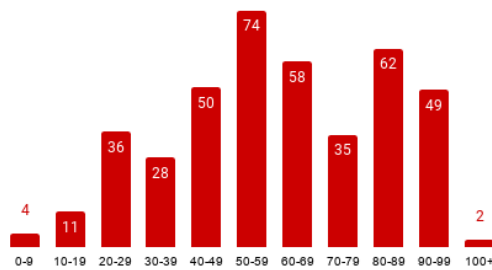
	Hillsborough	Millstone	Somerset County	New Jersey	United States
CASES	409	3	4,337	172,356	2,679,230
DEATHS	54	NA	447	13,251	128,024
RECOVERED	206	NA	NA	NA	NA

Daily Case Count

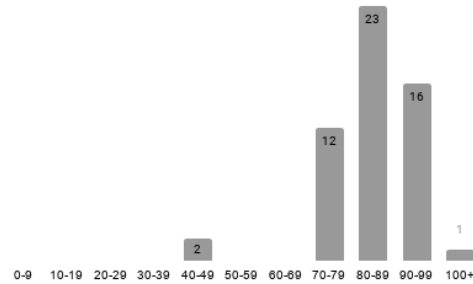


Breakdown of Hillsborough Township Cases As Reported by Hillsborough

Positive Hillsborough Township Cases by Age Range



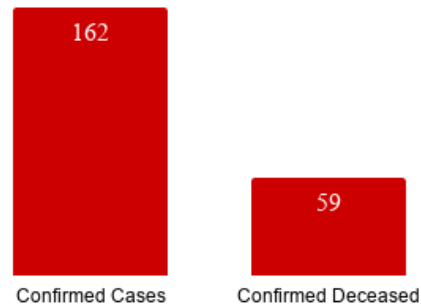
Deceased by Age Range



Disclaimer:

Please be advised that the numbers posted here and on the Township website are those that are reported by Hillsborough Township Health Department based on reports from the NJ Department of Health surveillance system. The reported numbers are only from those individuals who have been tested for COVID-19 and are confirmed positive through an FDA approved laboratory for COVID-19 testing purpose. It does not include those contacts of the positive individuals or any individuals, who are sick and have not been tested.

Hillsborough Long Term Care/Assisted Living



* Confirmed cases and confirmed deceased from Long Term Care and Assisted Living Facilities may not also be included in the total number of cases above.

The number of cases from the above section by age and deceased cannot be added to the Long Term Care and Assisted Living Facilities confirmed cases and confirmed deceased to get a total case count and a total deceased count. The reason for this is that there are different reporting mechanisms in place capturing that data. The NJ Department of Health surveillance system obtains reports from State run labs. The Long Term Care and Assisted Living Facilities utilize many different labs, State, out-of-state and private, therefore, their numbers are not completely reflected in the total Hillsborough numbers from the State system at this time. That withstanding, you cannot simply add the two sets of numbers either to get a total case count, as some of the LTC/ALF numbers are counted in the State system.

[NJ Residents with a Positive COVID-19 Test:](#) [Instructions & Next Steps](#)

If you are a Hillsborough resident and have tested positive for Coronavirus / COVID-19, please contact the Health Department at 908-369-5652.

The Hillsborough Township Health Department continues to monitor all cases and is working with the State to identify any potential contacts for follow-up. A representative from the Hillsborough Township Health Department will reach out to all individuals determined to have been in close contact with the positive testing persons within 24-48 hours of each case being confirmed.

[Testing at Raritan Valley College \(RVCC\) on Thursday July 9th](#)

Somerset County residents have another opportunity to get tested for COVID-19. The drive-thru test center at RVCC will be open from 10 a.m. to 1 p.m. on Thursday, July 9th. Appointments can be scheduled online at <https://somerset-hunterdon.adlabscovidtest.com>. [Prescriptions are no longer required for testing.](#)

[Somerset County COVID-19 Online Resource Center](#)

[COVID-19: Information for Communities and the General Public](#)

[Information on Underlying Conditions](#)

[Contact Tracing Opportunity](#)

Are you interested in assisting NJ's contact tracing efforts? [Register at the NJ COVID-19 Information Hub website](#) and be notified when opportunities become available.

[Meeting Updates, Cancellations and Closures](#)

Due to the Governor's Executive Orders and pursuant to P.L. 2020, c.11, all Township meetings will be held using virtual technology and the public may only participate in meetings remotely. Please [visit the calendar](#) on our municipal website for meeting dates, cancellations, updates and instructions.

**For a full list of COVID-19 Resources, visit the Hillsborough Township
[COVID-19 Information Page](#)**

How Can I Help?

[Somerset County Office of Emergency Management Continues to Accept Personal Protective Equipment \(PPE\) Donations](#)

The Somerset County Office of Emergency Management continues to accept donations of personal protective equipment. A collection box has been set up in front of the Emergency Services Training Academy, located at 402 Roycefield Road, Hillsborough, NJ 08844.

[**Register to Volunteer**](#)

Contacting Your State and County Officials

[Click here for information on contacting NJ State and Somerset County Officials](#)

This Newsletter is brought to you by the Hillsborough Township Committee:

Mayor
Doug Tomson

Deputy Mayor
Shawn Lipani

Committeeman
Frank DelCore

Committeewoman
Olivia Holmes

Committeewoman
Gloria McCauley

Hillsborough Township | www.hillsborough-nj.org