

Wednesday, June 24, 2020



HILLSBOROUGH e-News

Township News

Hillsborough Parks and Recreation Summer Program Updates

[Hillsborough Parks & Recreation Announces In-Person Day Camp Taking Place This Summer!](#)

Hillsborough Parks & Recreation is proud to announce that in person day camp will officially be taking place this summer. This has been a long process over the past few months in putting a program together that meets the required guidelines and requirements from the state of New Jersey, though we can confidently say we have been able to accomplish just that.

Below are a few of the highlight points of the 2020 summer camp program:

- One camp location at Auten Road School
- Ages 5-13 (Must have completed kindergarten)
- Camp will operate over a six week period from 7/6-8/14
- Various time frames offered between 7:00 am - 6:00 pm
- See the [COVID-19 Summer Camp standards](#) for details and answers many families are looking for

[Register here for Summer Camp.](#)



Hillsborough Parks & Recreation COVID-19 Youth Summer Camp Standards

Hillsborough Parks & Recreation 2020 Summer camp will without a doubt look different than it has in past years, though we are still confident in the overall program that will be offered. First and foremost, the overall safety and health of our children, staff and families is our number one priority and these new policy implementations should accommodate that fact. Through this long process we have been able to meet the necessary summer camp requirements and guidelines that parties such as the local & State Health Department Officials, Local Emergency Management, the American Camp Association, the Jersey Parks & Recreation Association as well as the CDC.

Since COVID-19 began rules and regulations have been changing on a daily basis and we anticipate that will continue to be the case throughout the summer. Parents/guardians will be informed immediately of any required changes as needed necessary.

Below are updated improvements and precautions that will be implemented for this summer's camp program. If you have any additional questions, please email news@hillsboroughnj.org

[Hillsborough Parks & Recreation Summer In-Person/Virtual Programs](#)

Hillsborough Parks & Recreation is proud to begin offering in person/virtual programs such as Art in the Park, Hip-Hop Dance, Bricks 4 Kidz and many more with registration starting today June 19th, at 5:00 pm.

Residents can now sign up for both virtual and in person programs. Continue to check the Parks & Recreation website and social media accounts for future release dates and information.



2020 Primary Election Information

[Somerset County 2020 Primary Election Updates](#)

- Per Executive Order 144, registered, active, Democrats and Republicans will be mailed ballots automatically. Unaffiliated and Inactive voters will be mailed a special application that they can use if they would like to receive a ballot for the July 7th Primary. That



application can also be [printed here](#) and mailed.

- [Somerset County Clerk Launches 'How to Vote by Mail' Video.](#)
- [For additional election information from Somerset County.](#)

Additional Primary Election Updates:

- The Primary will be held on July 7th.
- All registered Democratic voters will receive a Democratic Mail In Ballot, with pre-paid postage.
- All registered Republican voters will receive a Republican Mail In Ballot, with pre-paid postage.
- All registered unaffiliated and inactive voters will receive a Mail In Ballot Application, with pre-paid postage.
- To receive the ballot by mail, the application must be received by the *County Clerk* seven (7) days prior to the election. A voter may also return the application in person to the *County Clerk* until Election Day, but the voted ballot must be returned by 8 pm.
- The *County Clerk* cannot accept faxed or emailed copies of a Application for Vote by Mail Ballot, unless you are a Military or Overseas Voter, since an original signature is required.
- There are only 3 polling locations for this Primary in Hillsborough - the Municipal Building, Mary, Mother of God Church and Auten Road School.
- All other voters who visit a polling location will be required to vote on a provisional ballot.
- In person voting will be via provisional ballot only, unless the voter is visually impaired or otherwise certifies to a disability which requires an accessible voting machine.
- Please visit the state website at <https://www.nj.gov/state/elections> for more information.



Returning Primary Election Voted Mail-In Ballots:

- There is a drop box for ballots just outside the front entrance of the Hillsborough Municipal Building.
- There will also be drop boxes located in [several locations throughout the County.](#)
- All voted ballots must be in a drop box, delivered to Board of Elections, by 8:00 pm on Election Day.
- Voted ballots can be mailed to the Board of Elections at 20 Grove Street in Somerville - they must be postmarked by 8:00 pm on Election Day.
- Voted Mail In Ballots will not be accepted at the Polling locations.



[Ground Based Sparkling Devices and Novelties are Now Legal in New Jersey](#)

As the 4th of July approaches, please remember that only certain types of fireworks are legal in New Jersey. When using legal sparkling novelties, remember to wet them down before discarding. [See the reference guide for more information.](#) Please celebrate safely!





Hillsborough Township Municipal Services Open to Residents and Businesses

Hillsborough Municipal Services are open to serve both our residents and business community, despite the Municipal Building being closed to the public. [See the full list of services.](#)

Department Updates

Building:

- If your pool is capable of holding more than 24 inches of water, you need a permit. Pools have specific requirements for their installation and for their barrier. These requirements are intended to provide protection against potential drowning and near-drowning by restricting access to the pool. Statistics show every year more than 275 children under the age of 5 drown and over 4,000 seek medical treatment. The numbers almost doubles for children 15 and under. If you have a pool or plan on installing one, make sure it is safe and code compliant.

Business Advocate:

- There are several Hillsborough Farms open and offering services for our community as an additional resource for food products. For the latest information regarding the Hillsborough farming community, please visit [Experience Hillsborough](#) and click on [Hillsborough Harvest](#) or visit the [HBA Facebook page](#).
- Which of your favorite Hillsborough locations are "Open for Business"? Support Hillsborough's Local Businesses!



Engineering:

- All roads on the 2020 repaving program have been completed except for Camplain Road. It is being held off due to the proposed PSE&G gas line replacement taking place this fall and will be paved after the PSE&G work is completed.
- PSE&G indicated gas line upgrades are needed on other Township roads mainly due to the upcoming proposed widening of Route 206. Portions of Triangle Road, South Triangle Road, and New Amwell Road are on PSE&G's list and they will be responsible to repave full- or half-width of these roads since they were repaved less than 5 years ago.

Finance/Tax Collector:

- The Township will be issuing estimated 3rd quarter tax bills. The bills will be a

small, single sheet and will be for the August payment only. The Shop Hillsborough credits will be applied to those bills as well. The Finance Department will be mailing the bills during the week of June 22nd.

Public Works:

- The Clean Communities Grant program is continuing as planned with its funding. Please visit the township website under the [Public Works link](#) to explore volunteer opportunities in the upcoming months as the COVID-19 public gathering restrictions are lifted.
- Public Works programs such as Annual Clean Up Drop Off or Grass Drop Off Program are available - go to [our website](#) for details and to read the new safety guidelines.

Parks and Recreation:

- Hillsborough Parks & Recreation will have In-Person Day Camp this summer. It has been a long process over the past few months putting a program together that meets the required guidelines and requirements from the state of New Jersey. There will be one camp location, the Auten Road School, and it is open to ages 5-13 for a six week period from July 6th through August 14th. Visit the Township [website](#) for more details and registration information.
- There will also be virtual camps such as Basketball, tennis, soccer and Music Academy. Continue to check the Parks & Recreation [website](#) and social media accounts for future release dates and information.

Below are photos of Hillsborough Township Departments delivering the services that you have come to expect from Hillsborough Township.



Parks and Recreation:
Parks' Joe Maturin cleaning playground equipment



Public Works:
DPW's Glenn Geschwindner putting up Congratulations to HHS Graduates sign at Municipal Complex

Community News

Hillsborough Residents: Don't Forget to Respond to the Census!

The Census is important because it impacts future planning and funding for infrastructure, future employment, training and healthcare programs. To learn more about the impacts of the census or to complete it



online visit the website 2020CENSUS.GOV.
Take a few minutes and complete your census.

Greater Somerset County YMCA Career Forum 2020

Our volunteer-led Career Forum Program provides professional networking and job-search skills for our neighbors who are unemployed, underemployed or in a period of job transition. This free program offers useful assistance and, more importantly, hope. For more information visit: gscymca.org/career-forum



NJ DEP Urges Public to Help Control Mosquito Population by Eliminating Standing Water from Properties

The American Mosquito Control Association has declared June 21-27 as National Mosquito Control Awareness Week. With public health in the spotlight as a result of the pandemic, residents doing their part to eliminate potential breeding grounds for mosquitoes takes on added significance and bolsters the work of the New Jersey State Mosquito Control Commission. [Read more.](#)



Virtual Summer Health Series – Lunch N' Learn at 12pm

Brought to you by the Elizabeth Public Library, Horizon Blue Cross Blue Shield, Rutgers Cancer Institute of New Jersey, and Cancer Support Community Central NJ

Topics and Dates:

English Series - [registration required once for all workshops](#)

- July 10 - Finding Health Information You Can Trust
- July 24 - Eating Healthy for Cancer Prevention
- August 7 - LGBT Health and Cancer Prevention
- August 21 - Resource and Self Care for Caregivers

Spanish Sessions - registration required for each workshop

- 26 de junio - [Prevencion de Salud y Comprension de Medicaid](#)
- 30 de Junio - [Mi Plato En Un Presupuesto](#)
- Spanish language recordings for some of the English Series topics will also be available after the presentations

Summer Health Series

Join us at 12pm for a Zoom Lunch and Learn Series on the following dates and topics:

- Finding Health Information You Can Trust**
Friday July 10th
Ally Blumenfeld, Head of Information & Adult Services,
Elizabeth Public Library
Learn the basics of verifying health information found on the web including databases you can access to receive health information. Find out how your library can help on your health & wellness journey.
- Eating Healthy for Cancer Prevention**
Friday July 24th
Michelle Jansen, MS, MAT Community Cancer Control Specialist
at Rutgers Cancer Institute of New Jersey
Learn how to portion your plate with cancer-fighting foods and the different food groups can promote your health. Learn which foods you should avoid for optimal health.
- LGBT Health and Cancer Prevention**
Friday August 7th
Dominique Noel, Community Cancer Control Specialist
at Rutgers Cancer Institute of New Jersey
HPV-related cancers in the LGBTQ community including disparities in HPV vaccination, cancer screening rates and cancer outcomes. It will also briefly focus on LGBT terminology and information about LGBT organizations in central New Jersey will be provided.
- Resource and Self Care for Caregivers**
Friday August 21st
Iris Novas Cooney, RDH, MAOM
Member Advocacy and Community Outreach Transformation
Useful Health Care Resources for you and your loved ones during pandemic, including Medicaid/MATTS Related Research, Caregiver Self Care, and Health Management

Click here to register

sponsored by So that no one faces cancer alone®

Serie de Salud de Verano

Únase en línea a las 12pm por el almuerzo y aprender:

- Prevención de Salud y Comprensión de Medicaid**
viernes, 26 de junio
Iris Novas Cooney, RDH, MAOM
Recursos útiles para el cuidado de la salud durante esta pandemia. Recursos relacionados con Medicaid, Autocuidado y Mantenimiento de salud.

Haz clic [aquí](#) para registrarse

Para más información por favor comuníquese con
Katherine Schabbe: kschabbe@cancersupportcnj.org • (908) 658-5400 u4

auspiciado por

Para que nadie enfrente al cáncer en soledad™

Hillsborough-Millstone Municipal Alliance Updates

Class of 2020 Survival Guide to the Universe

Resources as you head out into the world!



Parents Who Host - reminder for parents about the consequences of serving underage kids as the summer/grad season approaches

For the safety of your children and our community, please keep this in mind as you celebrate this accomplishment.



Safe + Sound Somerset

Safe+Sound Somerset is a team of dedicated and qualified diverse professionals and volunteers sharing a commitment to empowering survivors and engaging the community to end abuse.



Safe + Sound Webinar Series

- July 29th: Spotting the Warning Signs of an Abusive Relationship
- August 24th: An Inside Look at Safe+Sound Somerset, The County's Lead Domestic Violence Response Agency
- [To register](#)



PIONEER Family Success Center

The Pioneer Family Success Center offers the community a gathering place, connect families to helpful resources in Somerset County, NJ and bring families together through free events, programs & local activities. [For Events Calendar](#).

Red Cross Offers Virtual Care for New Jersey Families Who Have Lost Loved Ones

Girl Scout Junior Troop #62308 Helping SAVE as Part of Bronze Award Project



Girl Scout Junior troop 62308 is helping SAVE as part of our Bronze Award project.

What is SAVE?
SAVE is a local animal shelter that rescues abandoned, abused, and homeless cats and dogs. SAVE relies on donations and does not receive funding at the local, state or federal levels. It was founded in 1983 and has been taking care of animals ever since. It is located at 1010 Route 93, Indian NJ 08838.

You Can Help Our Troop Help SAVE During These Tough Times!

- Please consider donating some of the following items:
- 100% cotton socks, gloves, and hats (or knit and tie hats, mittens, gloves, and hats also fine)
 - Items and all items - new and gently used only
 - Cat toys, catnip, catnip balls
 - Dog toys, dog leashes, dog collars, dog tags
 - "Thank You" cards, stickers, t-shirts, etc. (NO blankets please!)
 - Cat and dog food (any brand, any size)
 - Pet treats, snacks, toys, etc. (any brand, any size, any flavor)
 - Pet beds, blankets, towels, etc. (any brand, any size, any color)

Items can be delivered directly to SAVE.

For more information about SAVE, visit <http://www.saveanimalsnj.org/>

Somerset County News

Somerset County Library System of NJ (SCLSNJ)

- [With Governor Murphy's most recent Phase II announcement, we are pleased to offer contactless pickup of library materials through Hands Free Holds](#)
- ['Oh, the Places You'll Go' - Take a Vacation Through a Book this Summer with SCLSNJ](#)
- [Explore From Home: Challenge Yourself With SCLSNJ This Summer](#)
- [Somerset County Means Employment: Library System Offers Virtual Training, Resources, Assistance, More for Job Seekers](#)
- [Ask a Librarian](#)

[Somerset County June Recycling Schedule](#)

Contacting Your State and County Officials

[Click here for information on contacting NJ State and Somerset County Officials](#)

COVID-19 Updates

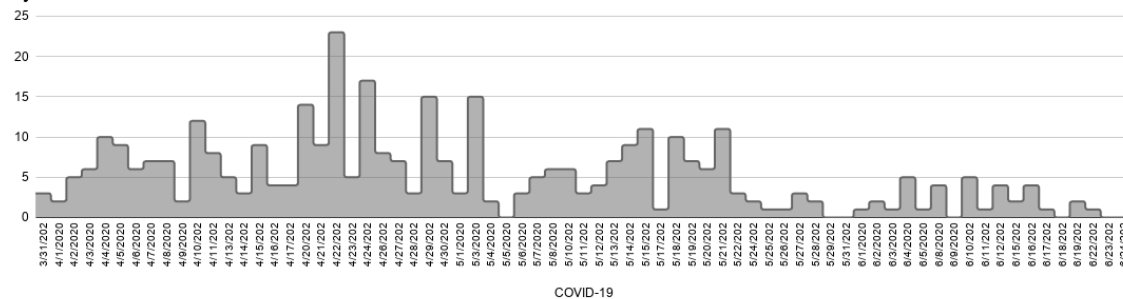
COVID-19 Hillsborough Reported Cases

[COVID-19 Case Information is updated daily on the Township website](#)

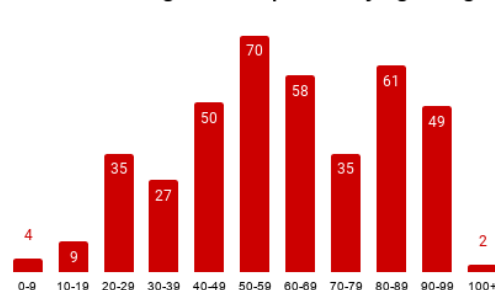
	Hillsborough	Millstone	Somerset County	New Jersey	United States
CASES	400	3	4,256	169,892	2,336,615
DEATHS	54	NA	440	12,895	119,923
RECOVERED	199	NA	NA	NA	NA

Breakdown of Hillsborough Township Cases As Reported by Hillsborough Township Health Department

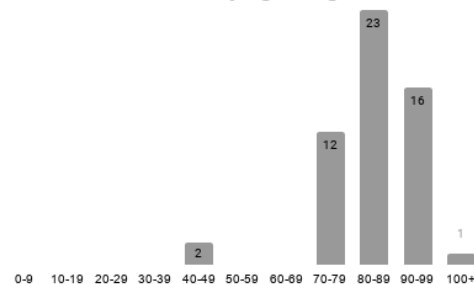
Daily Case Count



Positive Hillsborough Township Cases by Age Range



Deceased by Age Range

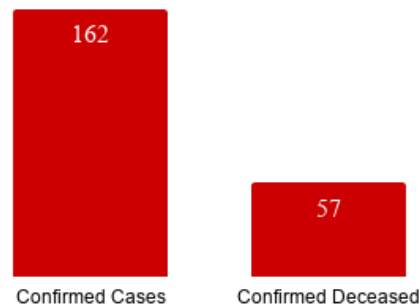


Disclaimer:

Please be advised that the numbers posted here and on the Township website are those that are reported by Hillsborough Township Health Department based on reports from the NJ

Department of Health surveillance system. The reported numbers are only from those individuals who have been tested for COVID-19 and are confirmed positive through an FDA approved laboratory for COVID-19 testing purpose. It does not include those contacts of the positive individuals or any individuals, who are sick and have not been tested.

Hillsborough Long Term Care/Assisted Living



* Confirmed cases and confirmed deceased from Long Term Care and Assisted Living Facilities may not also be included in the total number of cases above.

The number of cases from the above section by age and deceased cannot be added to the Long Term Care and Assisted Living Facilities confirmed cases and confirmed deceased to get a total case count and a total deceased count. The reason for this is that there are different reporting mechanisms in place capturing that data. The NJ Department of Health surveillance system obtains reports from State run labs. The Long Term Care and Assisted Living Facilities utilize many different labs, State, out-of-state and private, therefore, their numbers are not completely reflected in the total Hillsborough numbers from the State system at this time. That withstanding, you cannot simply add the two sets of numbers either to get a total case count, as some of the LTC/ALF numbers are counted in the State system.

If you are a Hillsborough resident and have tested positive for Coronavirus / COVID-19, please contact the Health Department at 908-369-5652.

The Hillsborough Township Health Department continues to monitor all cases and is working with the State to identify any potential contacts for follow-up. A representative from the Hillsborough Township Health Department will reach out to all individuals determined to have been in close contact with the positive testing persons within 24-48 hours of each case being confirmed.

[NJ Residents with a Positive COVID-19 Test:](#) [Instructions & Next Steps](#)

Somerset County COVID-19 Testing Site

[Testing at Raritan Valley College \(RVCC\) Continues - Spaces Still Available for July 2nd](#)

COVID-19 Testing continues for Somerset County residents at Raritan Valley Community College (RVCC). Reservations for June 25th have been filled, but spaces are currently available on Thursday July 2nd. Appointments for July 2nd can be scheduled online at <https://somerset-hunterdon.adlabscovidtest.com>. Testing will be by appointment only and a valid doctor's prescription is required. Testing site will be open from 10 am to 1 pm.

[Somerset County Provides COVID-19 Online Resource Center](#)

Somerset County created a COVID-19 online resource center for residents that offers the latest updates about resources, services and cases on its website, and the web pages are updated daily.

[COVID-19 Testing-Site Hotline Offers New Hours - Call to Make Appointments](#)

Somerset County Department of Health announced new hours of operation for the Somerset-Hunterdon COVID-19 hotline where eligible residents can make testing-site

appointments. Residents who do not have computer access or who would like to schedule an appointment for children 5 to 18 years of age can call the COVID-19 testing information line at 908-237-7150 on Monday through Friday from 9:00 am to 1:00 pm.

Meeting Updates, Cancellations and Closures

Due to the Governor's Executive Orders and pursuant to P.L. 2020, c.11, all Township meetings will be held using virtual technology and the public may only participate in meetings remotely. Please [visit the calendar](#) on our municipal website for meeting dates, cancellations, updates and instructions.

COVID-19 State & Community Resources

For a full list of COVID-19 Resources, visit the [Hillsborough Township COVID-19 Information Page](#)

[Hillsborough YMCA - Information For Essential Personnel Child Care](#)

[Contact Tracing Opportunity](#)

Are you interested in assisting NJ's contact tracing efforts? [Register at the NJ COVID-19 Information Hub website](#) and be notified when opportunities become available.

[NJ TRANSIT UPDATE](#)

NJ Transit will continue to respond to the latest on COVID-19 with customer and employee safety as a top priority and keep you informed of our response. To keep informed, go to:

- [NJ Transit - "Your Ride to Recovery" Guide](#)
- [NJ Transit Explores Use of Ultraviolet Technology in Battle Against COVID-19](#)
- [NJ Transit Installs More Modernized Ticket Vending Machines](#)
- [COVID-19 - How We're Protecting You](#)

Per Governor Murphy's Executive Order No. 125,

The number of passengers is limited to 50% of a vehicle's capacity.

50%

Customers must wear a face covering while on board a NJ TRANSIT vehicle.

Please do your part when you ride. Plan Ahead - Slow the Spread

How Can I Help?

[Click here for information on Hillsborough Township's Community Assistance Network \(C.A.N.\) Program](#)

Donations to the Hillsborough Community Assistance Network (C.A.N.) can now be made [online](#). Donation of items are also accepted - [see list of most needed items](#).

HILLSBOROUGH'S FOOD BANK

Updated 5/22/20

C.A.N. we count on you?

The Hillsborough Community Assistance Network continues to rely on the local community to help your Hillsborough neighbors in need.

Items we are currently low on:

Stuffing	Snacks	Laundry Detergent
Mashed Potatoes	Breakfast Bars	Dish Detergent
Pasta Sides	Canned Fruit	Cleaning Products
Hamburger Helper	Boxed Spaghetti	Cleaning Sponges

Items may be dropped off by the entrance to the Social Services Department. Located across from the wooden Gristmill. At the municipal complex Monday thru Friday between 8:00am and 4:30pm.

Monetary donations can also be made by mailing in a check or going to [hillsboroughnj.org](#)

Hillsborough Township Municipal Complex
The Peter J. Biondi Building
219 South Branch Road
Hillsborough, NJ 08844
(609) 261-3300
[hillsboroughnj.org](#)

[Somerset County Office of Emergency Management Continues to Accept Personal Protective Equipment \(PPE\) Donations](#)

The Somerset County Office of Emergency Management continues to accept donations of personal protective equipment. A collection box has been set up in front of the Emergency Services Training Academy, located at 402 Roycefield Road, Hillsborough, NJ 08844.

[Register to Volunteer](#)

This Newsletter is brought to you by the Hillsborough Township Committee:

Mayor
Doug Tomson

Deputy Mayor
Shawn Lipani

Committeeman
Frank DelCore

Committeewoman
Olivia Holmes

Committeewoman
Gloria McCauley

Hillsborough Township | www.hillsborough-nj.org