

Executive Summary of Public Health Assessment

Presentation to the Hillsborough Township Committee

November 28, 2023

Hillsborough Community Outreach Team

Siobhan Spano, MS, HO, Health Officer

Robin Vlamis, MPH, CHES

Mary Caputo, RN, MSN

Tiffany Neal, MPH, MCHES

Amado Pacheco, MPH, CHES

Alana Wojciechowski



Public Health
Prevent. Promote. Protect.

Background

- Grant Funding
 - December 2020 - June 2021
 - Strengthening Local Public Health Capacity (NJDOH pass-through from CDC)
 - July 2021 – June 2022
 - Strengthening Local Public Health
 - Vaccination Supplemental Funding Grant
 - July 2022 – June 2023
 - Strengthening Local Public Health
 - Vaccination Supplemental Funding Grant
 - July 2023 – June 2024
 - Strengthening Local Public Health
 - Includes social determinants of health



Updated Public Health Assessment

- **Timing:** Conducted from April-September 2023
- **Focus:** COVID-19, flu, RSV, tickborne disease, and other local health disparities for future planning
- **Partners:** Hillsborough Health Collaborative, Sustainable Hillsborough, Mayor's Wellness Campaign
- **Goals:**
 - Define and categorize populations disproportionately affected;
 - Detail the community demographics;
 - Describe health disparities and community impacts of COVID-19, flu, RSV, and tickborne disease;
 - List community agencies that provide support to these priority populations; and
 - Summarize key findings and priorities.




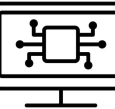




Updated Public Health Assessment


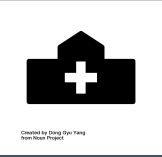



- Methods:
 - Reviewed secondary data sources
 - Distributed and analyzed community health and wellness survey
 - Conducted interviews and focus groups with key stakeholders, community informants, and priority populations
 - Analyzed quantitative and qualitative data
 - Solicited feedback from partners
 - Updated findings and recommendations



Priority Populations

 <small>shutterstock.com - 506342851</small>	Economic Disadvantage	People with low-income or limited assets, low-wage workers with multiple jobs, solo caregivers
 <small>Created by Amethyst Studio from Noun Project</small>	Age Groups	Senior citizens; infants and children; parents and guardians of young children or children with health conditions
 <small>Created by Amethyst Studio from Noun Project</small>	People Living in Congregate or Sub-Standard Living Situations	People living in long-term care facilities, group homes, or temporary housing
 <small>Created by Amethyst Studio from Noun Project</small>	Difficulty Accessing Information or Technology	People with low literacy, people with limited English proficiency, immigrants and refugees
 <small>Created by Amethyst Studio from Noun Project</small>	Isolation (Cultural, Geographic, or Social)	People without reliable transportation, people living alone, people who are homebound, people with mental illness, people in stigmatized groups (e.g. LGBTQ, racial/ethnic minorities, disabled)
 <small>Created by Amethyst Studio from Noun Project</small>	Census Tracts	<ul style="list-style-type: none">• Census tract 053805 (northeastern part of town bordering Manville and Millstone)• Census tract 053705 (west of 206 between New Amwell and Amwell)

Priority Populations (cont'd)

 <small>Created by Mikala County Health Department</small>	People with Certain Health Conditions	People who are hospitalized, people living with chronic health conditions, people living with mental illness or substance use, people with disabilities
 <small>Created by Shing Yen Yang Health Project</small>	Challenges with Accessing Healthcare	People who are uninsured or underinsured; people who avoid seeking care due to cost, access, or stigma
 <small>Created by Kasey Gaudin Health Project</small>	People at High Risk for Severe Illness from COVID-19	Senior citizens, pregnant women, and people with underlying health conditions or who are immunocompromised
 <small>Created by Public Health Health Project</small>	People at High Risk for Infection with COVID-19	Frontline essential workers, healthcare personnel, emergency responders, school and childcare workers
 <small>Created by Public Health Health Project</small>	Long-Term Care Residents and Staff	<ul style="list-style-type: none">• Skilled nursing/rehab facilities• Assisted living facilities• Group homes

Respiratory illnesses (COVID, flu, & RSV)

Health Impact

- COVID, flu, and RSV can cause mild to severe illness, and at times can lead to death.
- Anyone can get severe illness, but some people are at higher risk.

Populations Especially Affected

- Senior citizens (COVID, flu, RSV)
- Babies and children younger than 5 (flu, RSV)
- Pregnant women (COVID, flu)
- People of any age with underlying health conditions or who are immunocompromised (COVID, flu, RSV)

Action Plan

- Host flu/COVID vaccine clinics (~2 per month), share information about where to get the RSV vaccine, and coordinate vaccines for homebound residents.
- Offer infection control training at long-term care facilities.
- Distribute prevention messages through various channels, including Hillsborough Health Collaborative partners, the weekly Mayor's e-newsletter, the HTPS school district newsletter, Facebook, digital display board in the Municipal Building, and community events such as the Rotary Fair.
- Distribute COVID test kits to populations who may have trouble accessing them.



Tickborne Disease

Health Impact

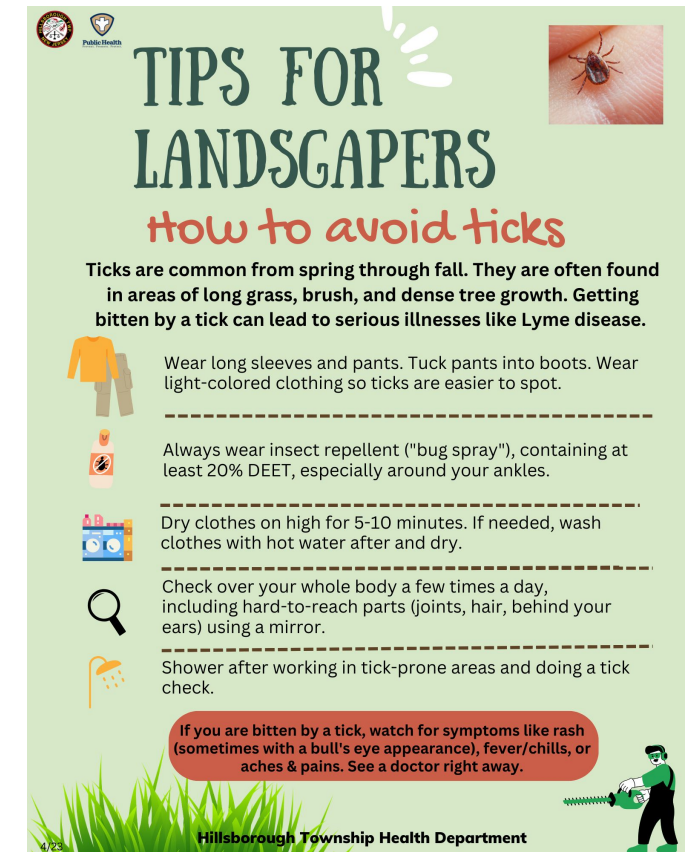
- Lyme disease is the most common tickborne disease. In 2021, NJ had the most cases of lyme disease in the U.S., and the third highest rate by population.
- If left untreated, lyme disease can spread to joints, the heart, and the nervous system.
- In addition to the human health impact, tickborne diseases pose a serious health threat to dogs and cats.

Populations Especially Affected

- Adults and children who spend time outdoors – working, hiking, or playing in grassy or wooded environments.
- In Somerset County, ticks are active year-round, with the greatest risk of spreading disease in the spring and early summer.

Action Plan

- Update the health department website with information on preventing tick bites, removing ticks, and other tick-related resources.
- Post tick prevention signs at outdoor spots where ticks are common (e.g. walking paths).
- Distribute prevention messages through various channels, including Hillsborough Health Collaborative partners, the weekly Mayor's e-newsletter, the HTPS school district newsletter, Facebook, digital display board in the Municipal Building, and community events such as the Rotary Fair.

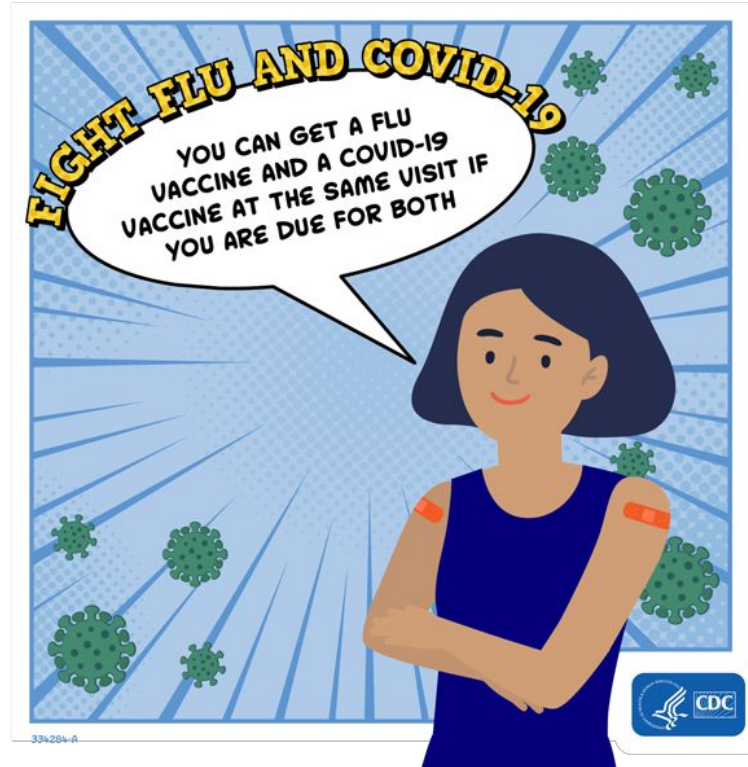


Overall Action Plan

- Improve access to testing, vaccines, and disease monitoring
 - Distribute COVID test kits
 - Distribute information about local testing and vaccine access
 - Coordinate vaccine access through clinics and homebound visits
 - Use CDRSS database for infectious disease monitoring and investigation
- Community outreach
 - Update resource directory and promote linkages to primary care and support services (e.g. diabetes, childcare, SNAP)
 - Distribute health education materials through diverse channels
 - Table at community events (e.g. Rotary Fair, Green Living and Wellness Fair)
 - Improve communication about existing resources and services
- Partnerships with local stakeholders
 - Facilitate monthly Hillsborough Health Collaborative meetings
 - Partner with library to offer and promote more ESL classes



Thank you!



Questions? Please contact:
Hillsborough Community Outreach Team
908-369-5652
healthcollaborative@hillsborough-nj.org



Public Health
Prevent. Promote. Protect.